

Star Knobs

Stainless Steel

SPECIFICATION

Types

- Type **E**: With threaded blind bore
- Type **C**: With plain blind bore H7

Version with Threaded Bushing

Stainless steel AISI 316L

- Matte, shot-blasted
- Knob drawn from stainless steel sheet
- Hub welded

Version with Threaded Stud

Stainless steel AISI 316L

- Matte, shot-blasted
- Knob drawn from stainless steel sheet
- Hub with threaded stud welded

INFORMATION

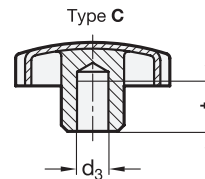
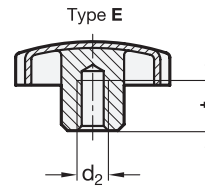
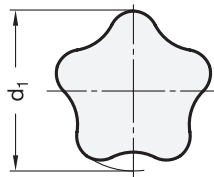
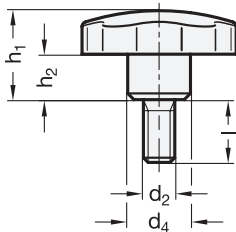
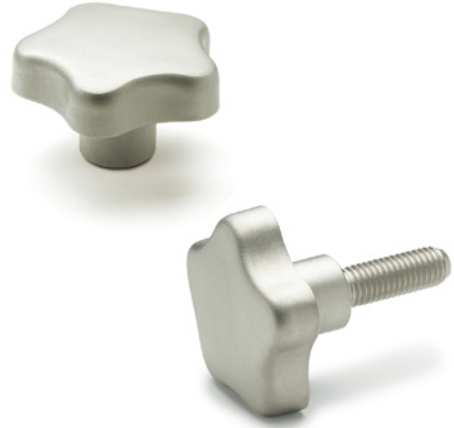
The original ELESA design with 5 recess grips is typical for star knobs GN 5334.4.

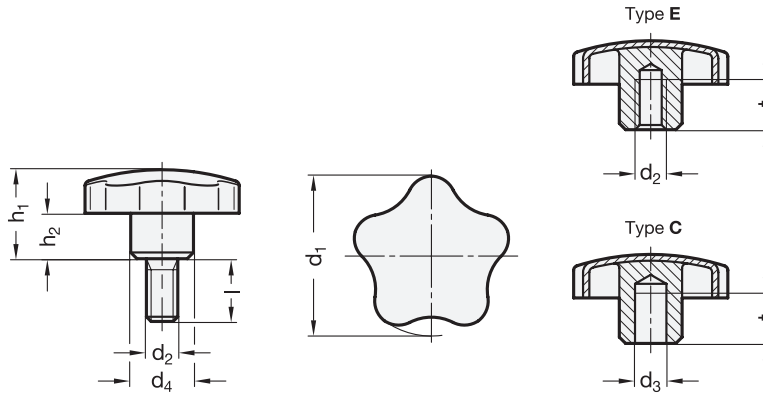
This form gives these grips an appealing look and additionally allows a high torque to be achieved.

- More Information on Loss Protections (see page)

TECHNICAL INFORMATION

- Cross Holes GN 110 (see page A17)
- ISO-Fundamental Tolerances (see page A21)
- Stainless Steel Characteristics (see page A26)





GN 5334.4 with Threaded Bushing

STAINLESS STEEL

Description	d1	d2 Thread	d3 H7 Bore	d4	h1 ≈	h2 ≈	t min.	⚖
GN 5334.4-32-M5-E	32	M 5	-	12	21	10	12	27
GN 5334.4-32-M6-E	32	M 6	-	12	21	10	12	27
GN 5334.4-40-M6-E	40	M 6	-	14	24	12	15	41
GN 5334.4-40-M8-E	40	M 8	-	14	24	12	15	37
GN 5334.4-50-M8-E	50	M 8	-	18	30	16.5	18	74
GN 5334.4-50-M10-E	50	M 10	-	18	30	16.5	18	68
GN 5334.4-60-M10-E	60	M 10	-	20	37.5	20	22	124
GN 5334.4-60-M12-E	60	M 12	-	20	37.5	20	22	122
GN 5334.4-32-B6-C	32	-	B 6	12	21	10	12	26
GN 5334.4-40-B8-C	40	-	B 8	14	24	12	15	37
GN 5334.4-50-B10-C	50	-	B 10	18	30	16.5	18	67
GN 5334.4-60-B12-C	60	-	B 12	20	37.5	20	22	109

GN 5334.4 with Threaded Stud

STAINLESS STEEL

Description	d1	d2	l	d4	h1 ≈	h2 ≈	⚖
GN 5334.4-32-M6-16	32	M 6	16	12	21	10	33
GN 5334.4-32-M6-20	32	M 6	20	12	21	10	34
GN 5334.4-32-M6-30	32	M 6	30	12	21	10	36
GN 5334.4-40-M8-20	40	M 8	20	14	24	12	43
GN 5334.4-40-M8-30	40	M 8	30	14	24	12	53
GN 5334.4-40-M8-40	40	M 8	40	14	24	12	57
GN 5334.4-40-M8-50	40	M 8	50	14	24	12	63
GN 5334.4-50-M10-20	50	M 10	20	18	30	16.5	91
GN 5334.4-50-M10-30	50	M 10	30	18	30	16.5	97
GN 5334.4-50-M10-40	50	M 10	40	18	30	16.5	110
GN 5334.4-50-M10-50	50	M 10	50	18	30	16.5	111
GN 5334.4-50-M10-60	50	M 10	60	18	30	16.5	117
GN 5334.4-60-M12-20	60	M 12	20	20	37.5	20	155
GN 5334.4-60-M12-30	60	M 12	30	20	37.5	20	157
GN 5334.4-60-M12-40	60	M 12	40	20	37.5	20	161
GN 5334.4-60-M12-50	60	M 12	50	20	37.5	20	170
GN 5334.4-60-M12-60	60	M 12	60	20	37.5	20	187

